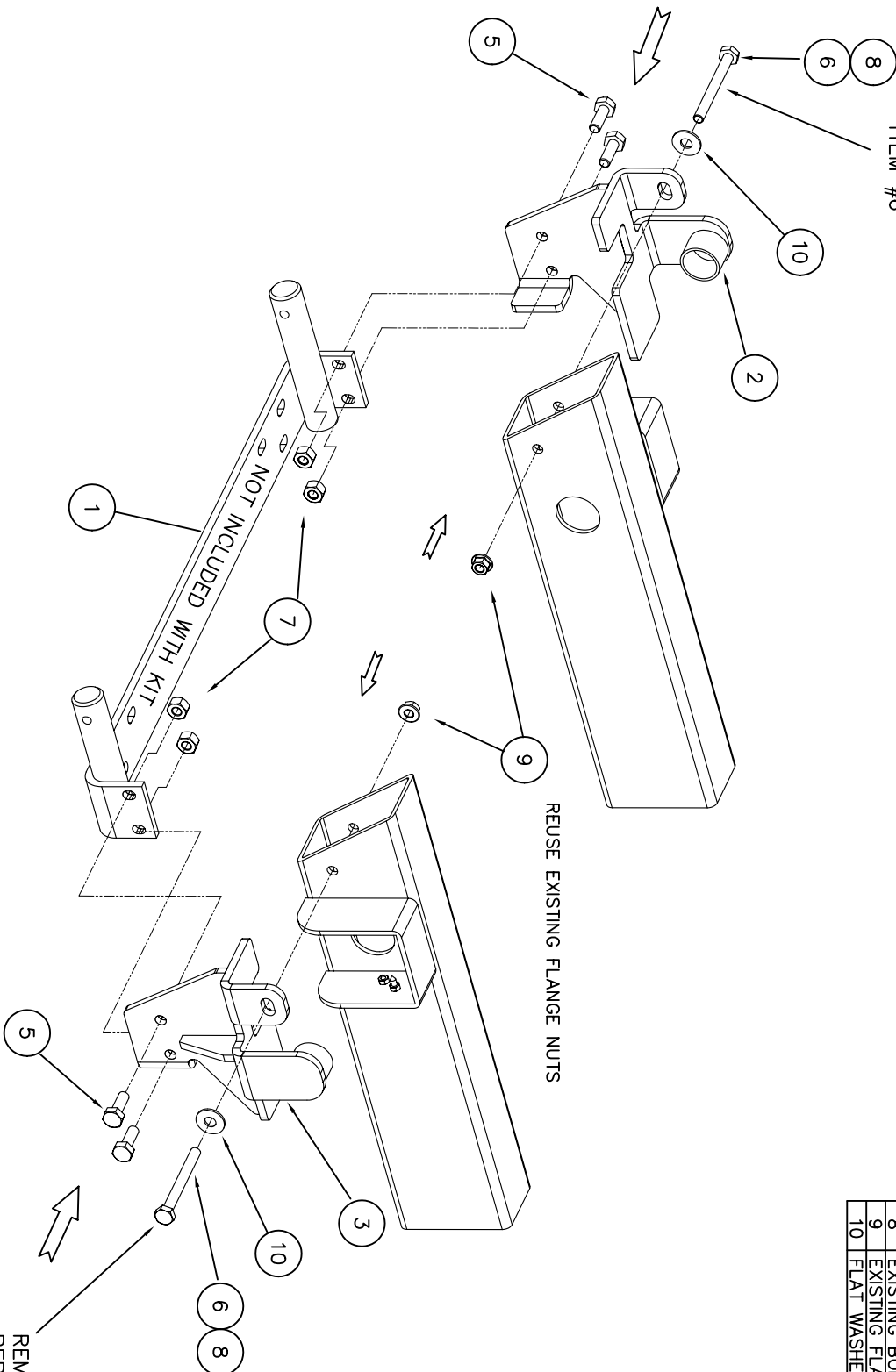


This custom kit is manufactured by Snowbear Limited to fit:

GM SIERRA/CHEVROLET SILVERADO 2500HD
(2WD)&(4 x 4) YEAR 2007

REMOVE EXISTING BOLTS #8
REPLACE WITH LONGER BOLTS
ITEM #6



ITEM	DESCRIPTION	PART #	QTY.
1	CROSS MEMBER	5XM5	1
* NOT INCLUDED IN KIT, PURCHASE SEPARATELY			
2	L.H. SUPPORT ASSEMBLY	53014L	1
3	R.H. SUPPORT ASSEMBLY	53014R	1
4			
5	HEX BOLT 1/2-13 x 1 1/2	72510	4
6	M12 x 1.75 x 130 METRIC BOLTS	76455	2
7	LOCKING HEX NUT 1/2-13	72595	4
8	EXISTING BOLTS		2
9	EXISTING FLANGE NUTS M12X1.75		2
10	FLAT WASHER 1/2"	72580	2

SIDE VIEW-LOOSEN INSIDE
BOLT TO ALLOW MOUNT
ASSEMBLY

REMOVE EXISTING BOLTS #8
REPLACE WITH LONGER BOLTS
ITEM #6